

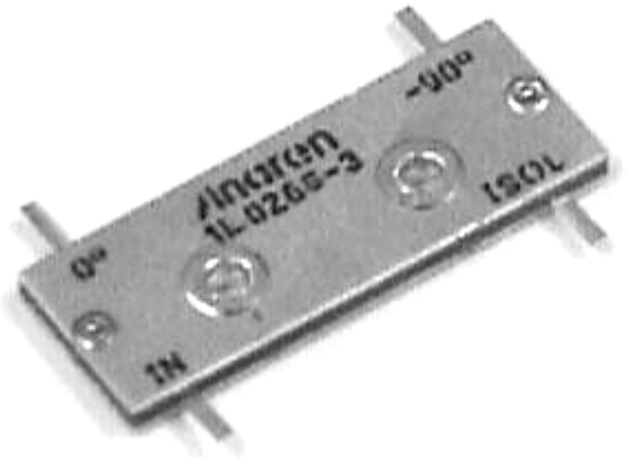
Hybrid Couplers 3 dB, 90°

Applications

- Microstrip Circuits
- Dividers/Combiners
- Switch Networks
- Balanced Detectors
- Antenna Feeds

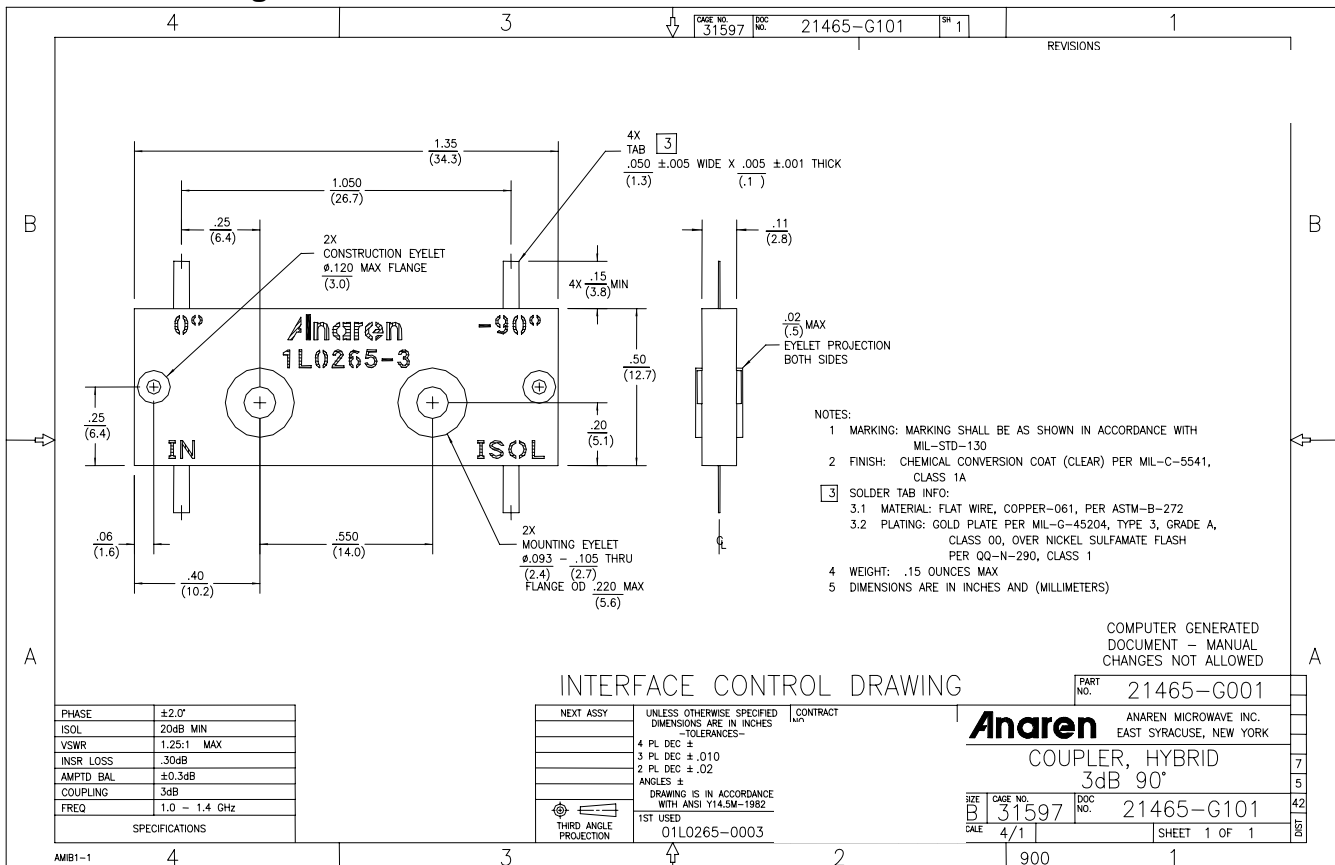
Features

- 1.0 – 1.4 GHz
- Welded Tab mount
- Reliable Performance
- Handles 150 Watts
- Meets MIL-E-5400 Class 3 Requirements

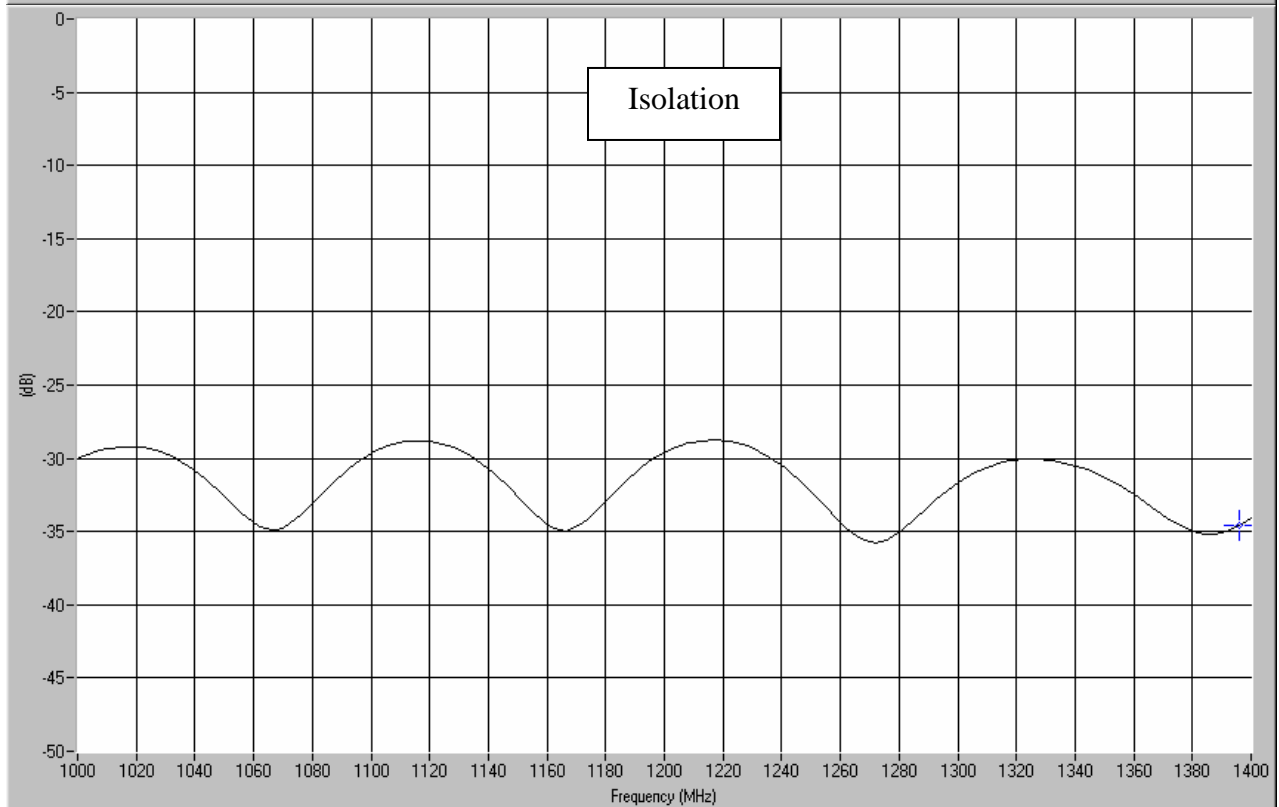
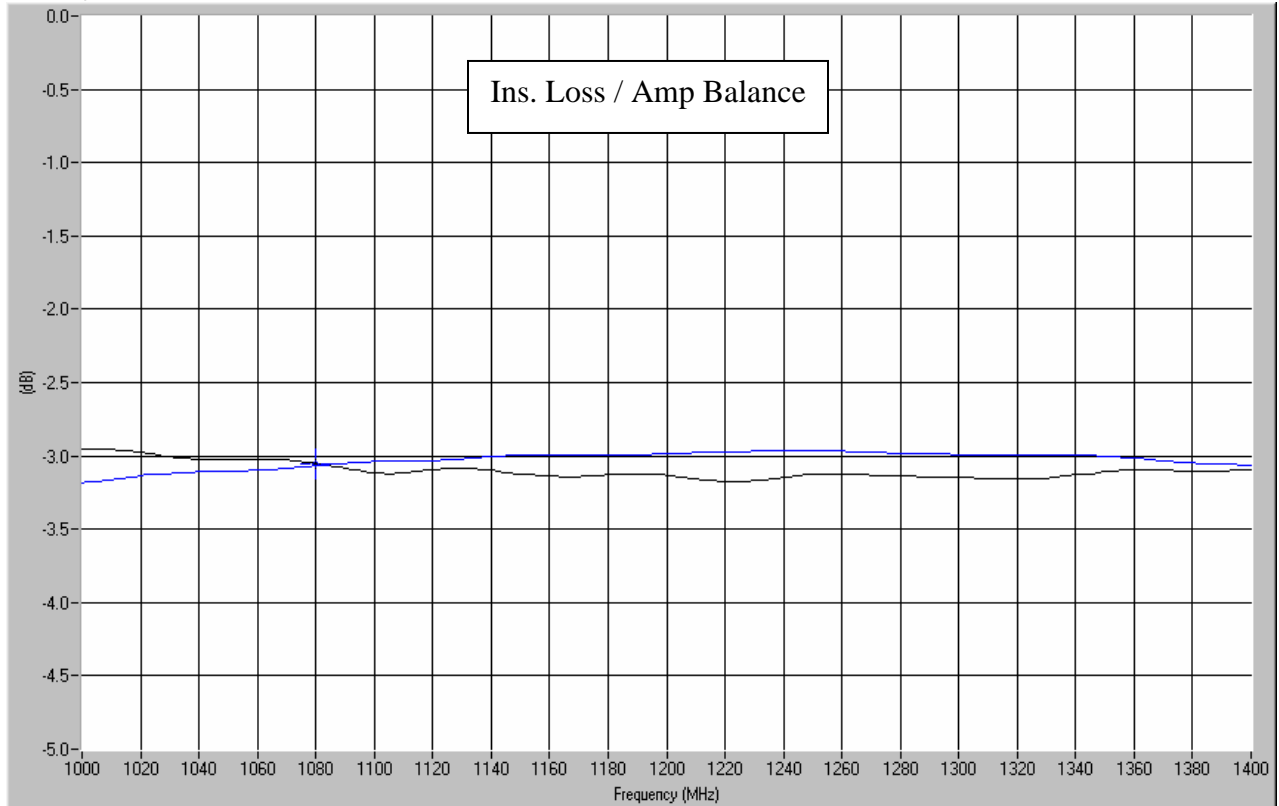


NOTES: Anaren Power rating applies when solder tab/coupler interface has been conformally coated.
Electrical and Mechanical Specifications subject to change without notice.

Outline Drawing



Typical Test Data Plots



USA/Canada: (315) 432-8909
Toll Free: (800) 411-6596
Europe: +44 2392-232392